

Advancing Public Engagement Across LTERs | 2215188

Co-PIs: John C. Besley (MSU, jbesley@msu.edu), Martha R. Downs (NCEAS), Kari O'Connell (OSU), Karen Peterman (Catalyst Consulting), Anthea Lavelle (HBRF) | lternet.edu/apeal

Project Description

The APEAL project seeks to advance the development of shared, evidence-based public engagement with science (PES) strategies aimed at enhancing reciprocal exchanges and ongoing relationships with communities. Using the Long Term Ecological Research (LTER) Network as a model, the team works with LTER engagement staff, scientists, and local community members to inform PES research through practice.

Key Achievements

- What we have **accomplished**:
 - Surveyed scientists about their PES views
 - Co-created an initial PES Strategic Plan with a partner site
- What we have **learned**:
 - Strong desire for more PES strategy and range of barriers to strategic decision-making

Audience & Settings

Audience: Scientists, Prioritized Communities (Often Local), Environmental decision-makers, Adults, PES Practitioners

Disciplinary area:

Ecology, STEM, Science Communication

Learning environment:

Town Hall/Community Gatherings, Public Events and Festivals, Research Centers and Networks, Community Outreach Programs

Access and Inclusion

The APEAL project promotes equity by centering the interests, needs, and assets of local communities and fostering reciprocal exchanges between scientists and community members.

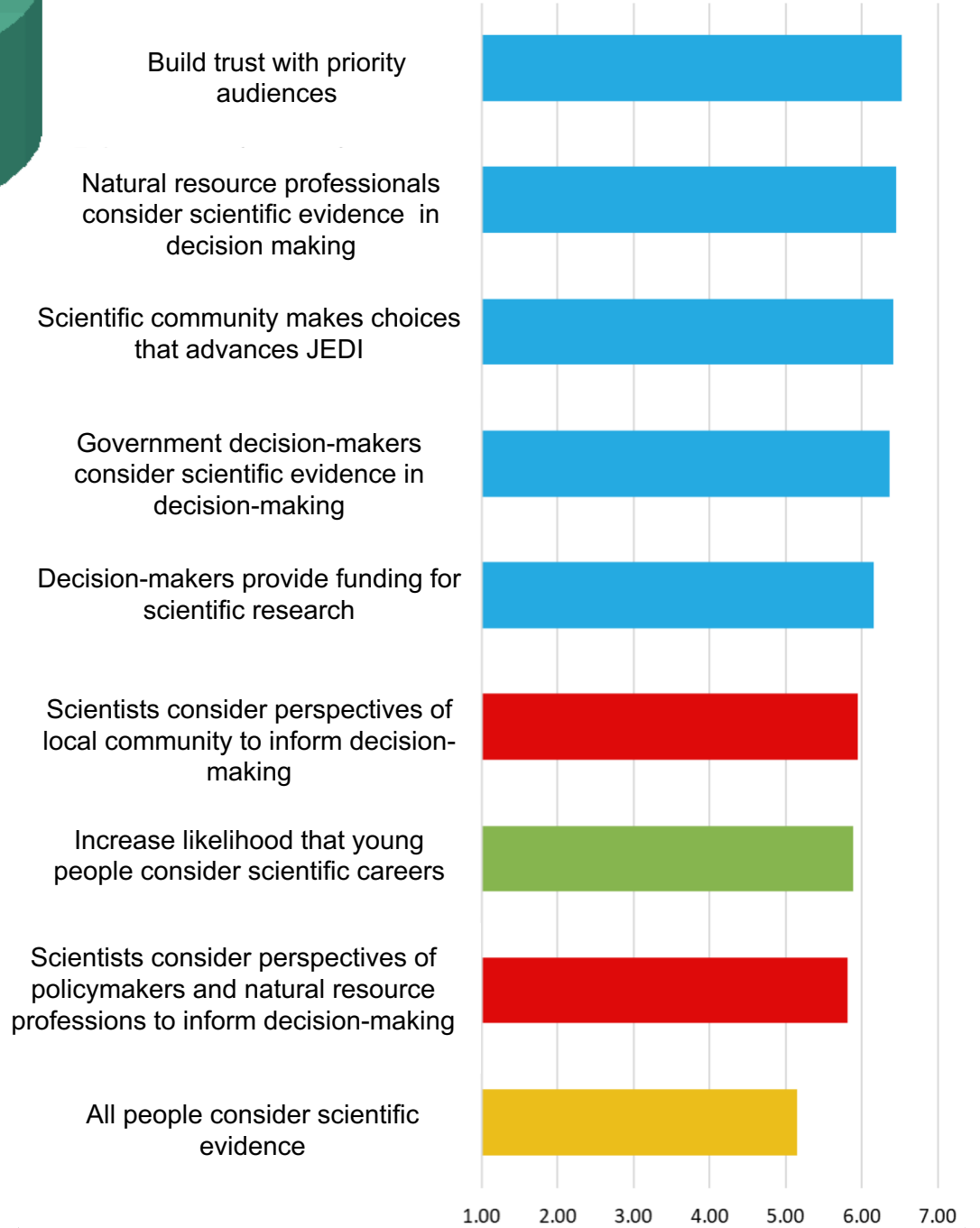
Advancing Public Engagement Across LTERs



Advancing Public Engagement Across LTERs | 2215188



“In general, how important or unimportant should the following type of public engagement goal be for your primary LTER site in the context of deciding where to devote engagement time and financial resources?”
(1 = Very unimportant, 7 = Very important)(n = 371)



This material is based upon work supported by the National Science Foundation under grant 2215188. Any opinions, findings, and conclusions or recommendations expressed in this material are those of the author(s) and do not necessarily reflect the views of the National Science Foundation.