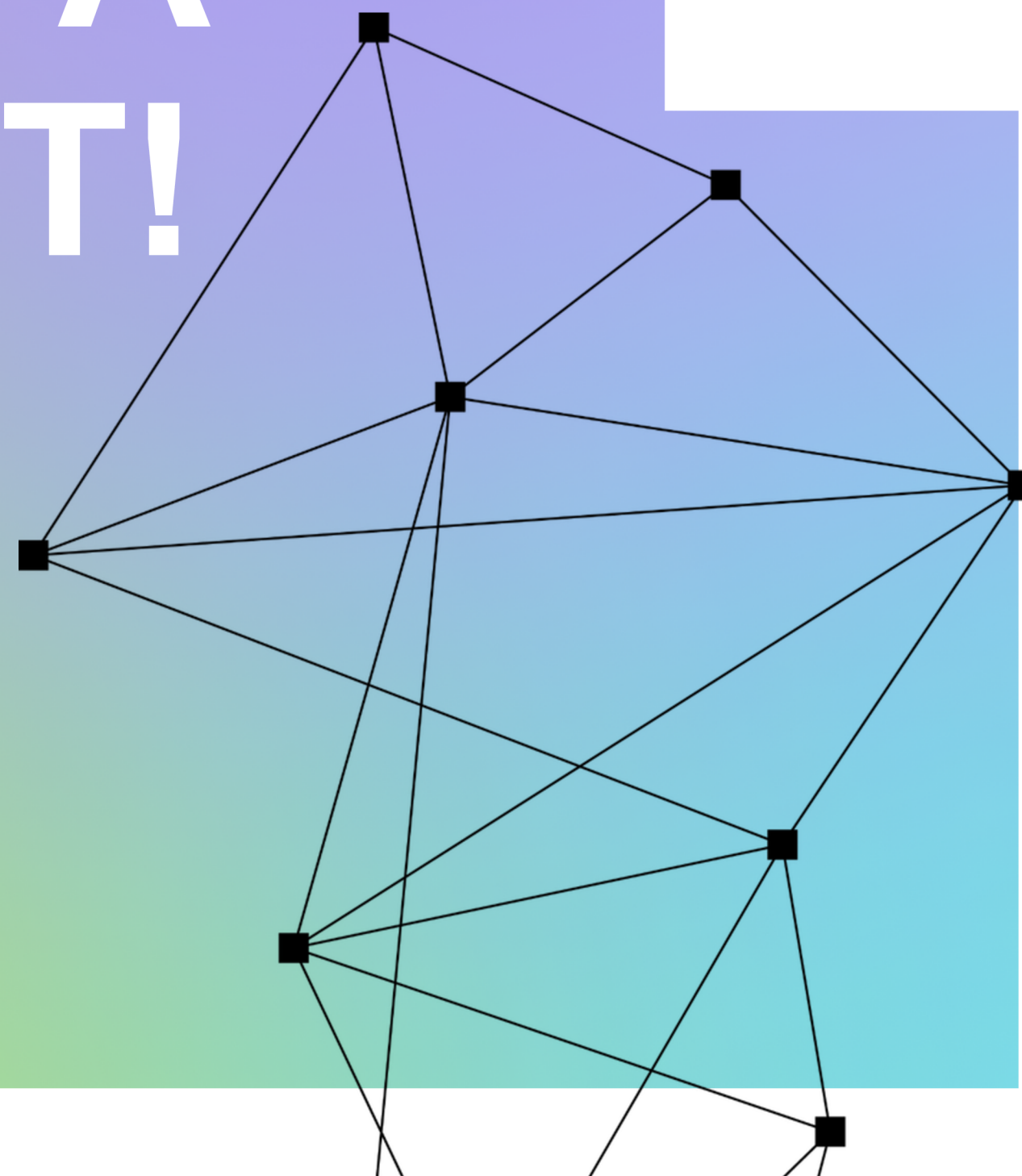




TEEN SCIENCE CAFÉ  
NETWORK

# CREATING A MOVEMENT!



TEEN SCIENCE CAFÉ  
NETWORK

# Who We Are



TEEN SCIENCE CAFÉ  
NETWORK



## Katey Ahmann

- Director of Teen Science Café Network
- Founder of an original Teen Science Café site (NC Museum of Natural Sciences)
- Museum leader | Raleigh–Durham, NC



## Toni Bruner

- Director of Legacy, Partners Department in Environmental Education
- Environmental education leader | Troy University graduate
- President, Alabama Environmental Education Association



Informal STEM experiences designed by teens, for teens



Real-world science that feels relevant & community-connected



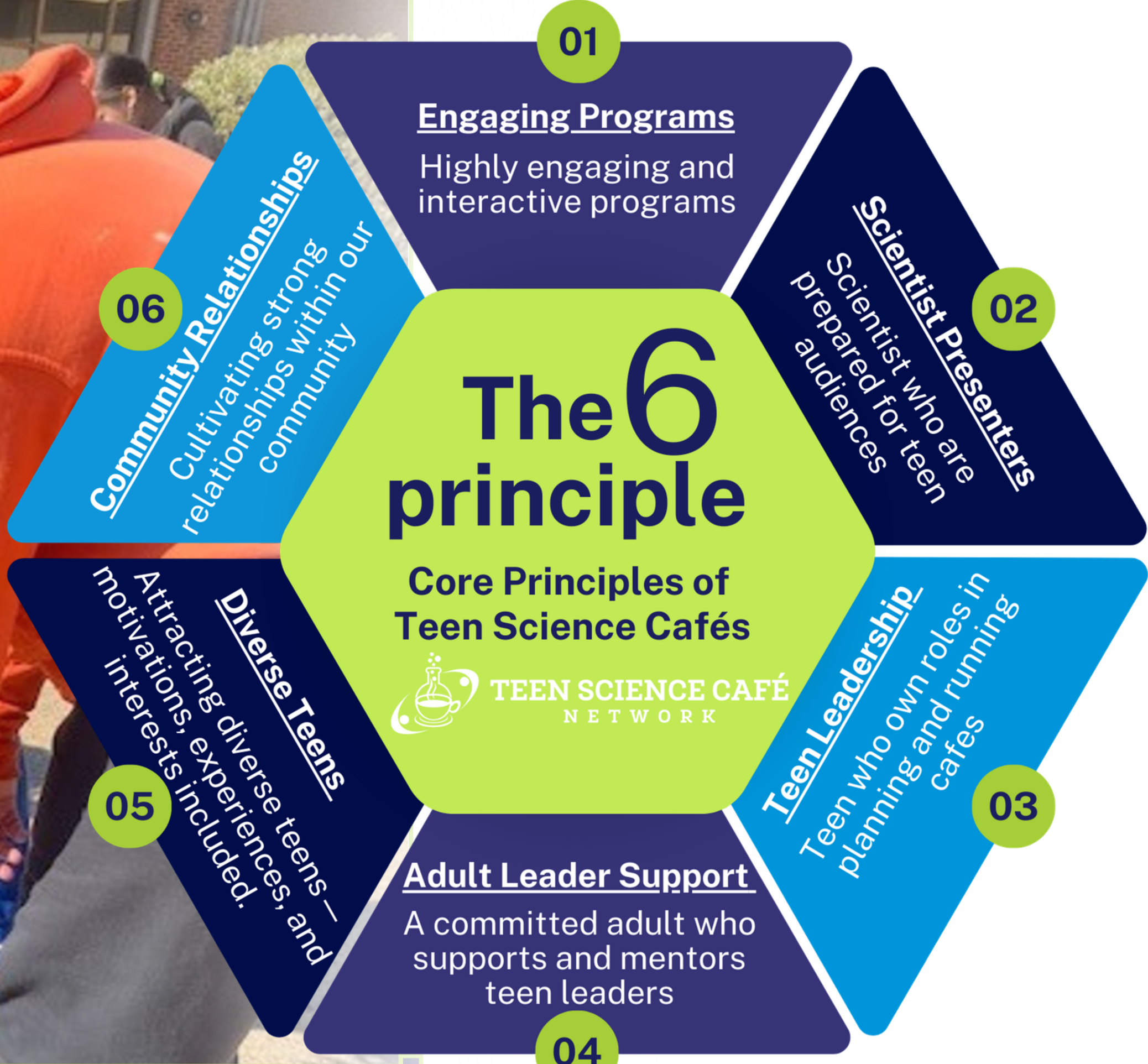
National network infrastructure supporting sites nationwide



Growth requires intentional design — not chance



Focused on scaling & sustaining a teen-driven model





# One-on-One Support Matters



Personalized mentorship is foundational to sustainable growth. It ensures confident adult leaders, empowered teens, and strong site launches which makes long-term scale possible.

# Intentional Community Building

Scaling is not just about adding more sites it's about building connections between them.



## We invest in:

Professional development webinars

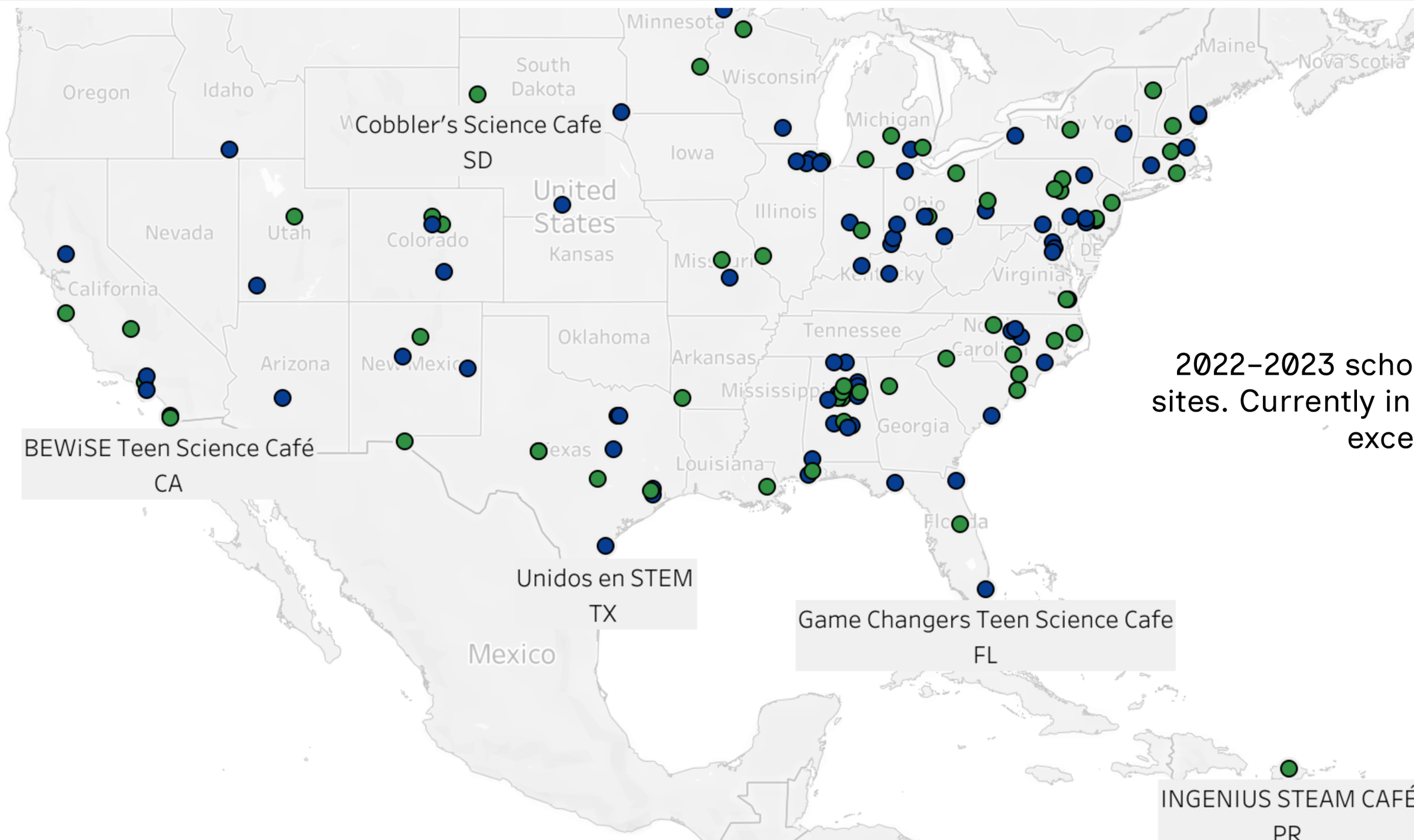
Cross-network collaboration

Partnerships with the out-of-school sector

Updated website and a Member Portal



# Growth That Speaks for Itself



2022–2023 school year, we had 31 active sites. Currently in 2026 we are projected to exceed 130 sites.

**This kind of growth only happens when the model is strong and the support systems are intentional. It reflects both strategy and sustainability.**



TEEN  
SCIENCE  
CAFÉ



**Legacy**

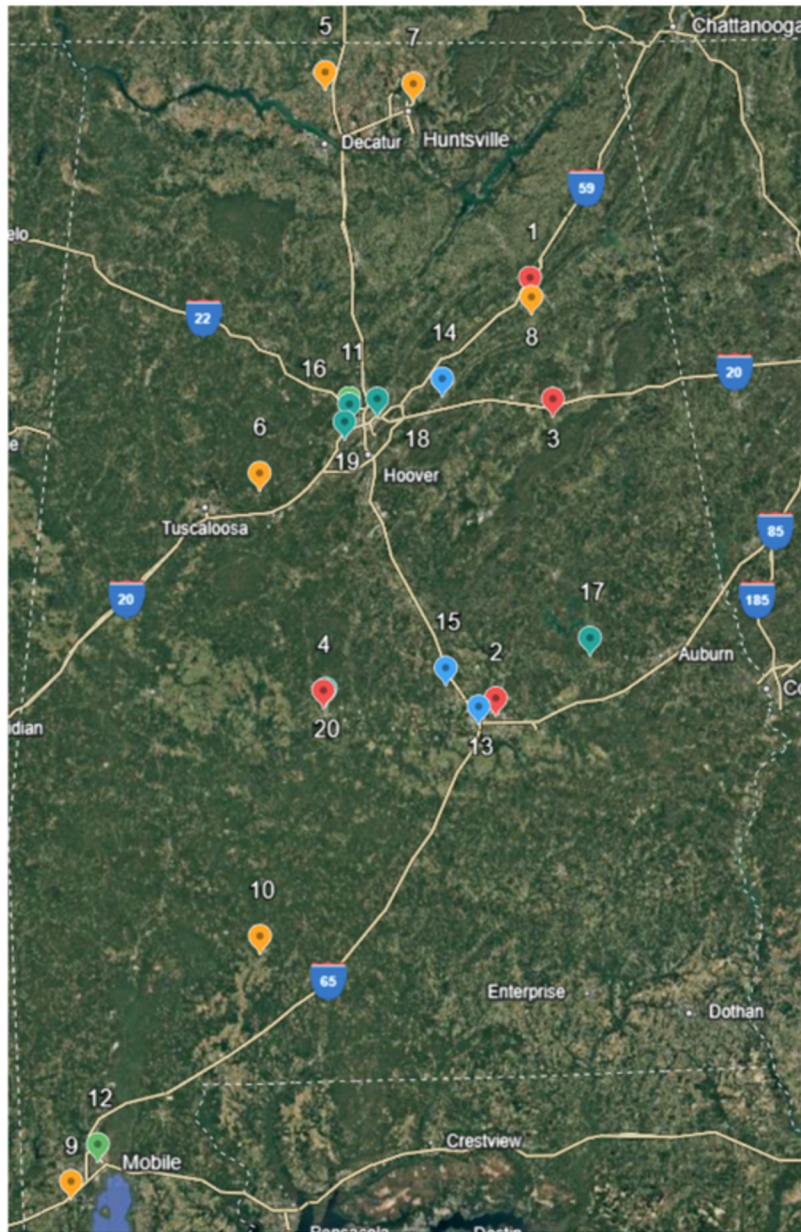
Partners In Environmental Education

**Alabama:  
Scaling Teen Science Cafés Statewide**

# Legacy's 2026

Youth-Led • Community-Partnered • Rapid 3-Year Expansion

## Teen Science Cafés



1. Gadsen City High School (Gadsen, AL)
2. Goodwyn Middle School (Montgomery, AL)
3. Munford Middle School (Munford, AL)
4. Hudson STEAM Academy (Selma, AL)
5. Athens High School (Athens, AL)
6. Brookwood High School (Brookwood, AL)
7. Chapman Middle School (Huntsville, AL)
8. Southside High School (Southside, AL)
9. Theodore High School (Theodore, AL)
10. Monroe County High School (Monroeville, AL)
11. South Hampton K-8 School (Birmingham, AL)
12. Alabama School of Math and Science (Mobile, AL)
13. GW Carver High School (Montgomery, AL)
14. Moody High School (Moody, AL)
15. Prattville High School (Prattville, AL)
16. Jackson-Olin High School (Birmingham, AL)
17. Reeltown High School (Notasulga, AL)
18. i3 Academy High School (Birmingham, AL)
19. Midfield High School (Midfield, AL)
20. Selma High School (Selma, AL)



**20 Active Sites (Most in the Network)**  
**12 Rural | 8 Urban Communities**  
**2,919+ Teens Served**  
**79 Industry Presenters in 2025**  
**70 Cafés | Avg. 36 Students Each**

Website: [legacyenvd.org/teen-science-cafe](https://legacyenvd.org/teen-science-cafe)

# CONTACT US !



*Visit Our Website*



[www.teensciencecafe.org](http://www.teensciencecafe.org)

**Katey Ahmann, Director**  
[kahmann@stemnext.org](mailto:kahmann@stemnext.org)