

THE  
GIANT  
ROOM

# GIANT Remix Stations: A Community Publication Program

Contact  
[Azi@thegiantroom.com](mailto:Azi@thegiantroom.com)



A 4x3 grid of 12 photographs showing students engaged in various STEAM activities. The images depict children working on projects like building structures, using VR, and creating art, all featuring the TED-Ed logo. The photos are arranged in four rows and three columns. The first row shows a boy in a green shirt working on a project, a boy in a blue shirt working on a project, and a girl in a light blue shirt working on a project. The second row shows a boy in a grey shirt working on a project, a boy in a white shirt with a 'TED-Ed' logo working on a project, and a girl in a white shirt with a 'TED-Ed' logo working on a project. The third row shows a girl in a yellow shirt working on a project, a boy in a blue shirt working on a project, and a girl in a red shirt working on a project. The fourth row shows a boy in a grey shirt working on a project, a girl in a black shirt holding a 'TED-Ed' sign, a girl in a black shirt working on a project, a boy in a grey shirt working on a project, a girl in a black shirt working on a project, and a girl in a black shirt working on a project.





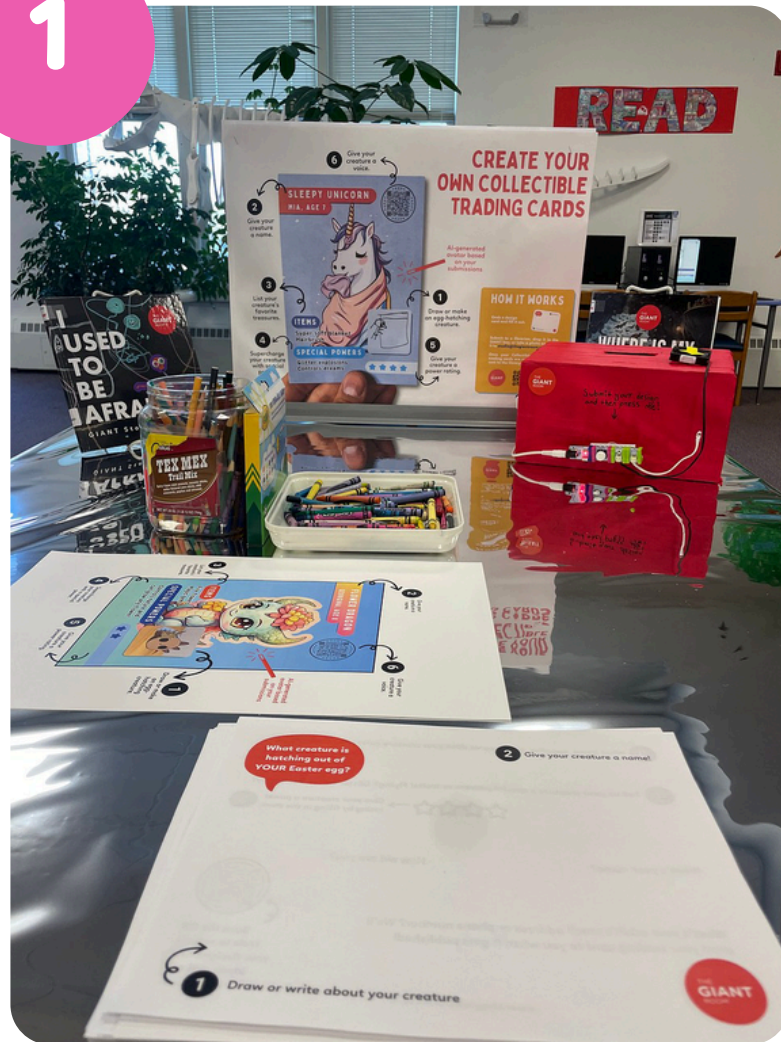
# The GIANT Remix

AI-Powered Creative Storytelling  
Program for Youth in Public Libraries



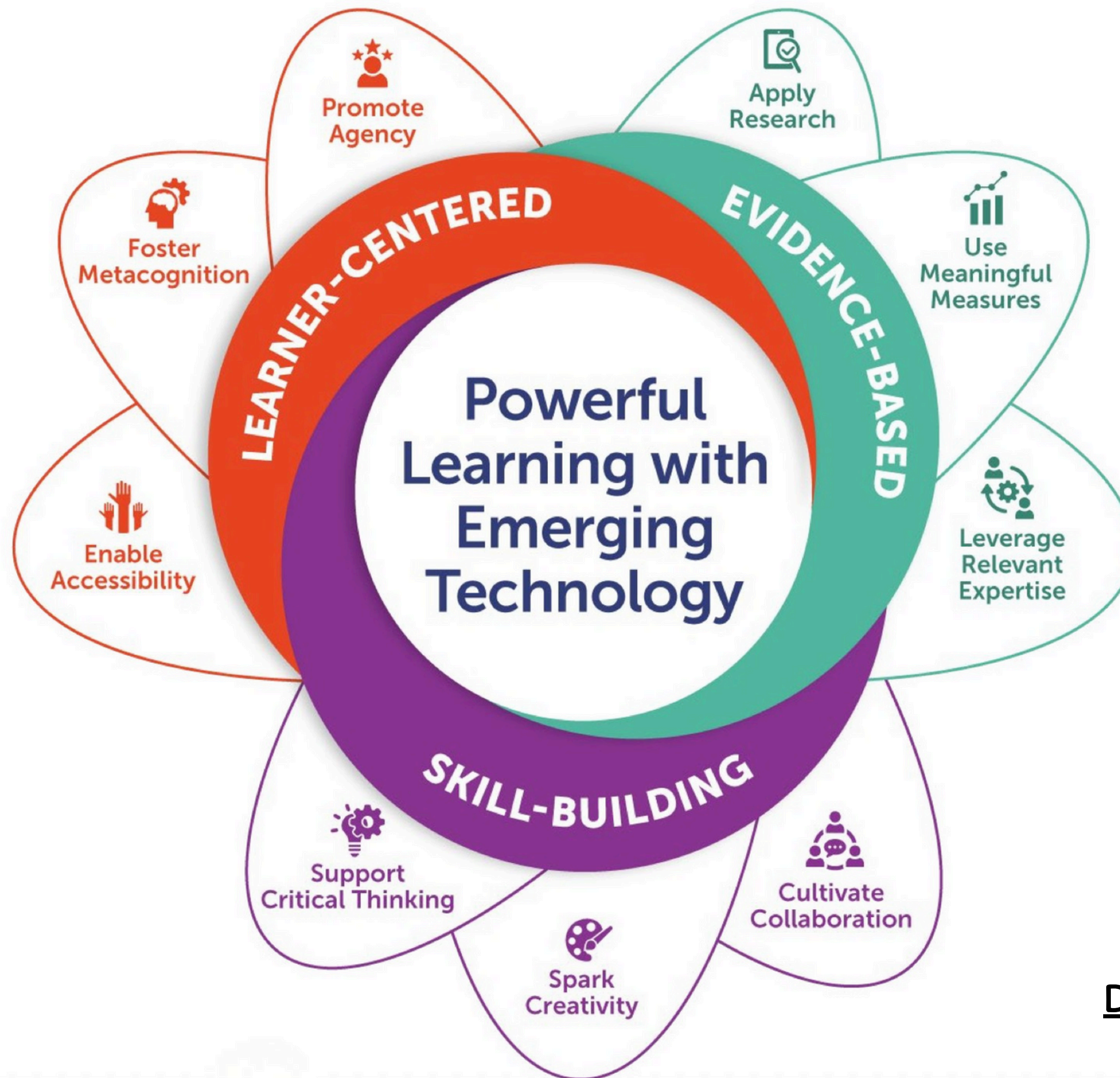
# Recommendations for Program Leaders

1



Provide accessible  
entry points.





Digital Promise 2025



# Elise's First Station

at Killingly Public Library



What creature is hatching out of YOUR Easter egg?

2 Give your creature a name!

Charlie the Adventurous Blue Jay

1 Draw or write about your creature

THE GIANT ROOM

3 What items, supplies, or treasures does your creature carry around with them?

His treasure is a marble

He has a best friend, Jack who is a dog.

4 Tell us your creature's special powers or traits! Flying? Glitter farts? Telepathy?

He can fly and hide and run well.

5 Give your creature a power rating by filling in the stars.

★★★★☆

What's your name?

Elise

How old are you?

9 nine

What's your adult's email address or phone number? We'll send your trading card to you when it gets published!

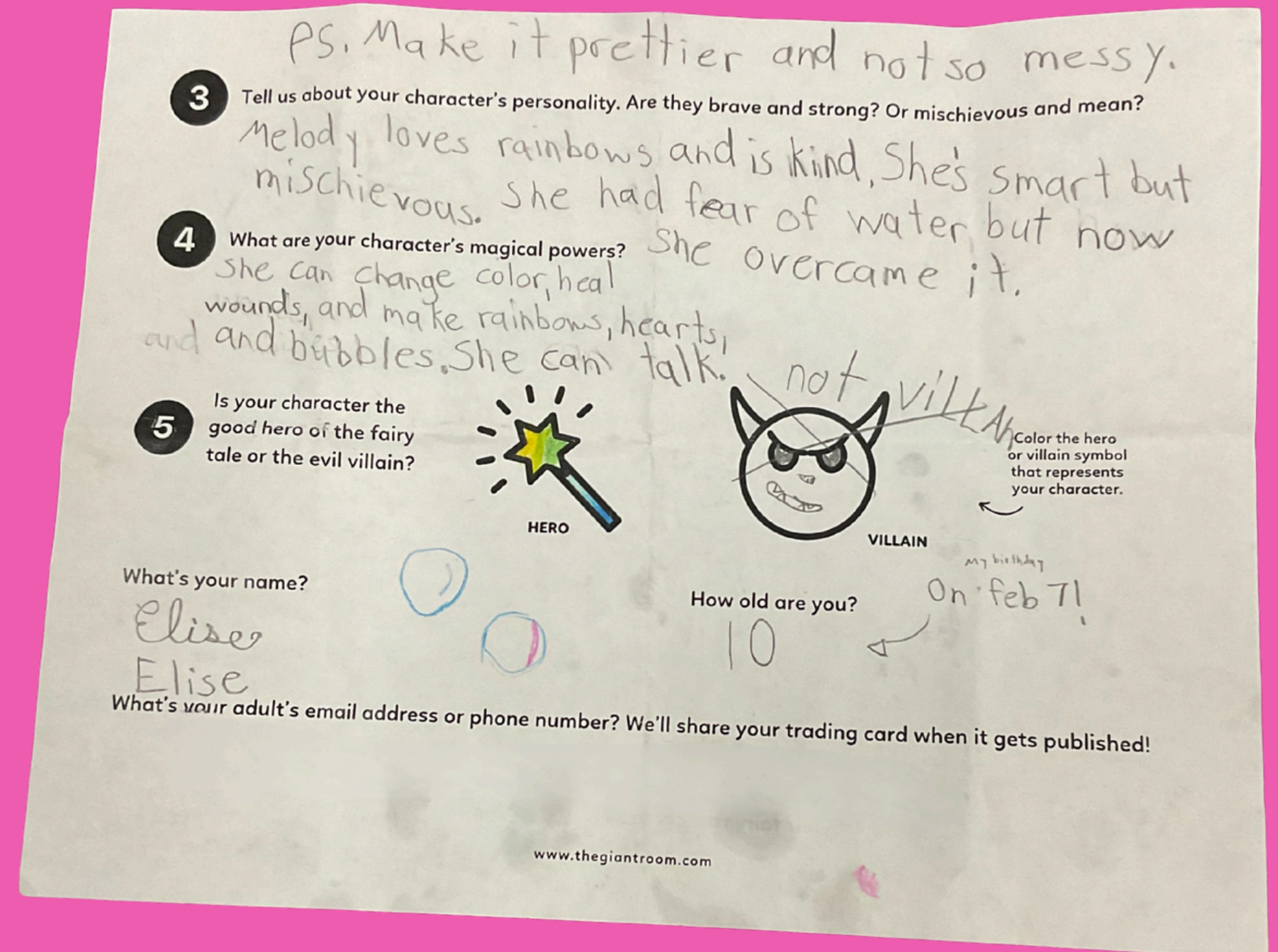
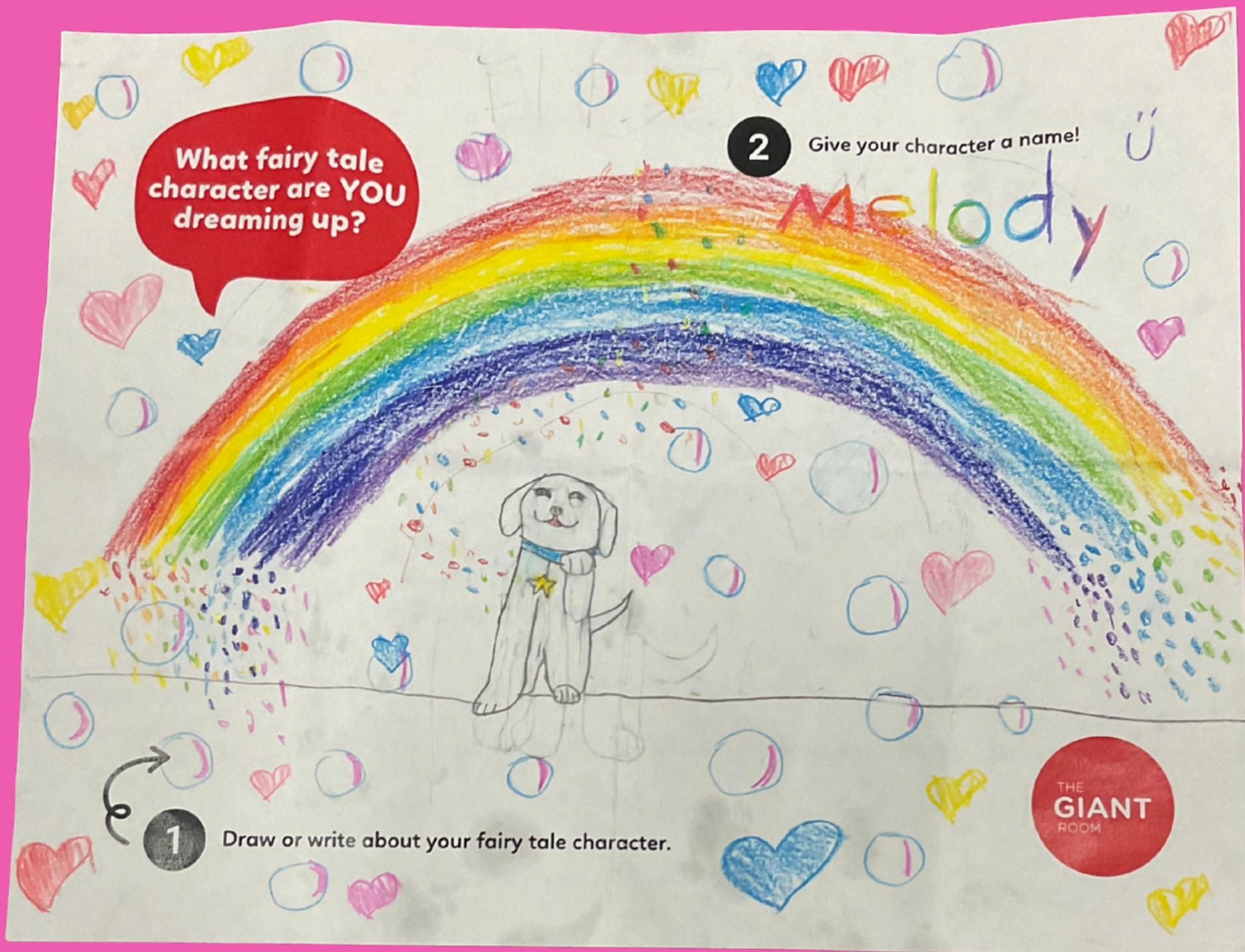
Scan the QR code to submit your designs and ideas and get published!

www.thegiantroom.com



# Elise's Third Station

at Killingly Public Library









What animal are  
YOU dreaming up,  
Anabel?



2 Give your animal a name!  
Zoro

They have  
(has star earrings) ears that  
are  
pointy  
but they look  
like fur.



1 Write about a real or imaginary animal

3 Tell us what physical traits your animal has. Fur? Gills? Large claws?  
It has black and brown fur and a clip with a star on it.

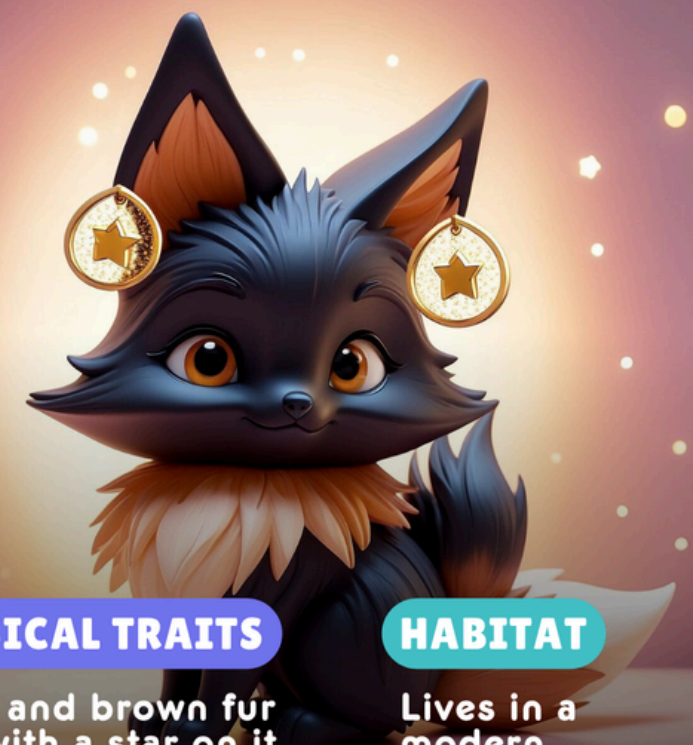
4 Give your animal some special powers! Flying? Telepathy?  
Telekinesis (A potion spilled on her)

5 Where does your animal live? Where is its habitat or home?  
In a modern mansion

Creative Scientist:  
Anabel

How old are you?  
7 years old

\* ZORO \*  
ANABEL, AGE 7



PHYSICAL TRAITS

Black and brown fur  
Clip with a star on it  
Pointy fur ears

HABITAT

Lives in a  
modern  
mansion

SPECIAL POWERS

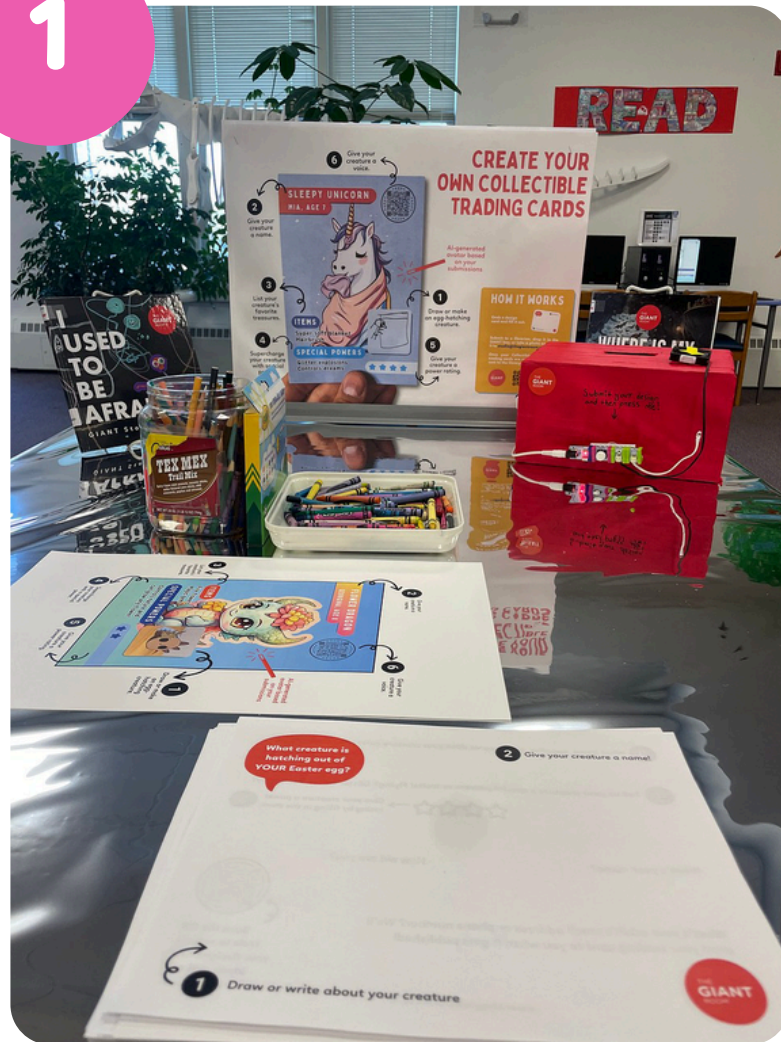
Telekinesis (A potion  
spilled on her.)





# Recommendations for Program Leaders

1



Provide accessible entry points.

2



Design programs for the whole family.

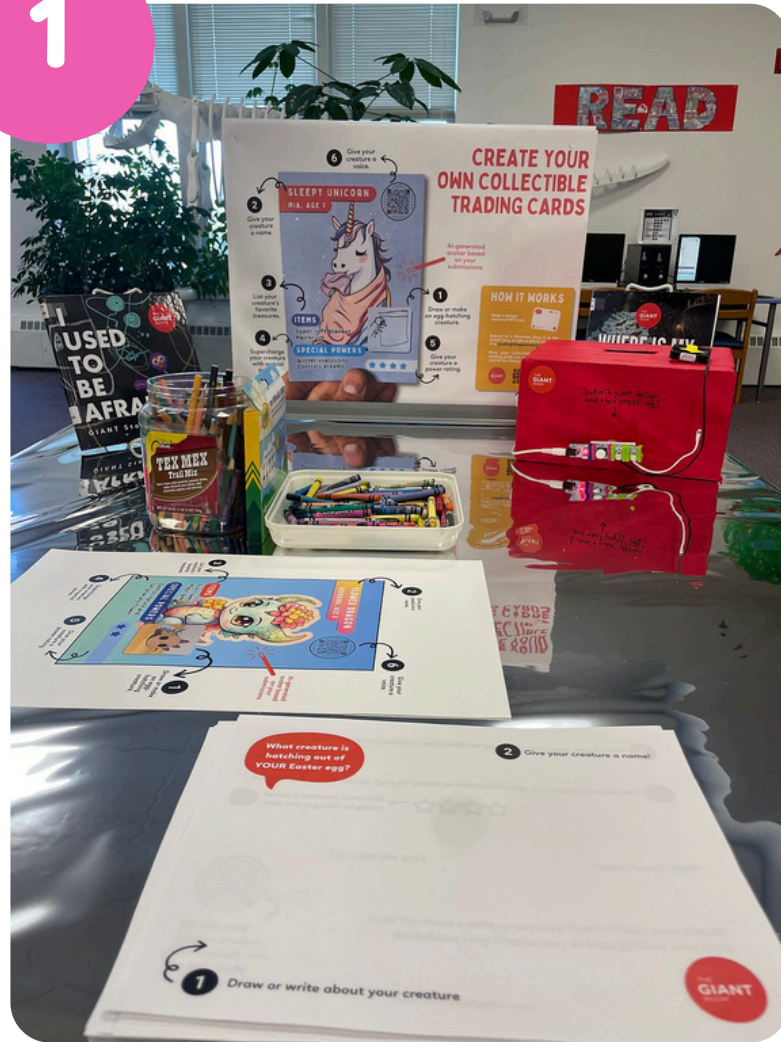






# Recommendations for Program Leaders

1



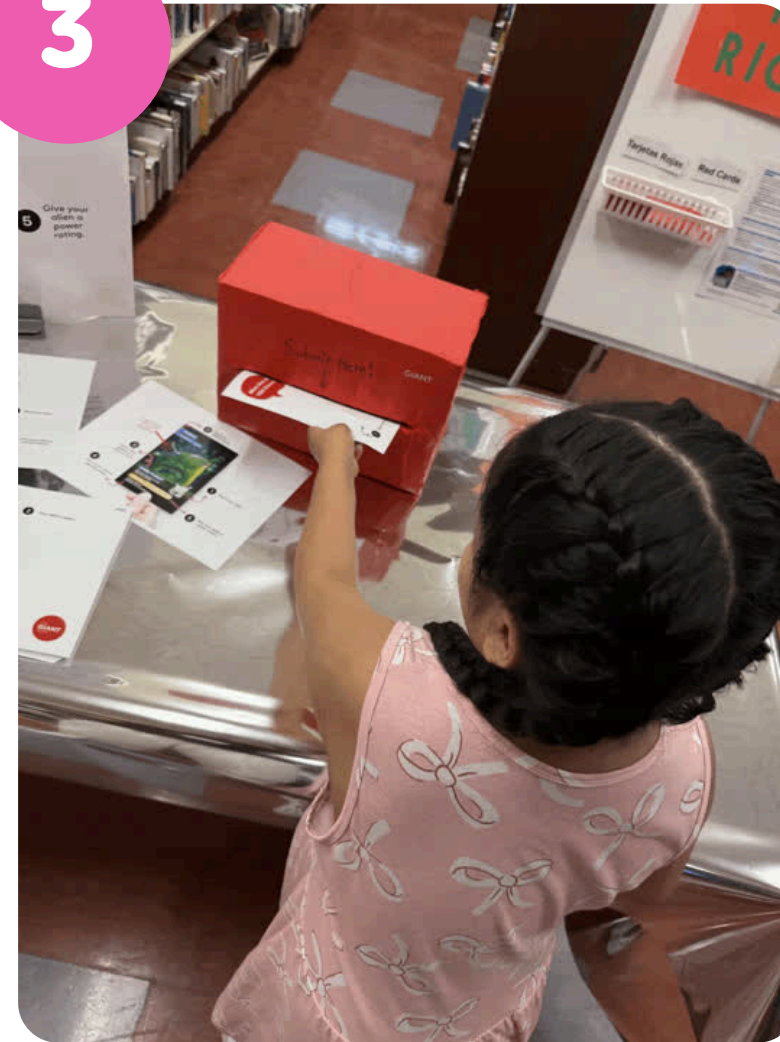
Provide accessible entry points.

2



Design programs for the whole family.

3



Create opportunities for AI literacy.





**You've got mail!**



## 🤔 Give Feedback

What do you like? ✅ What don't you like? ❌ And how can it get better? 💡



### Feedback ideas

The style is so cute.

The background is boring.

I love the colors!

I like...

I don't like...

It can get better by...

Add to your feedback

| like.... I don't like.... It can get better by.....



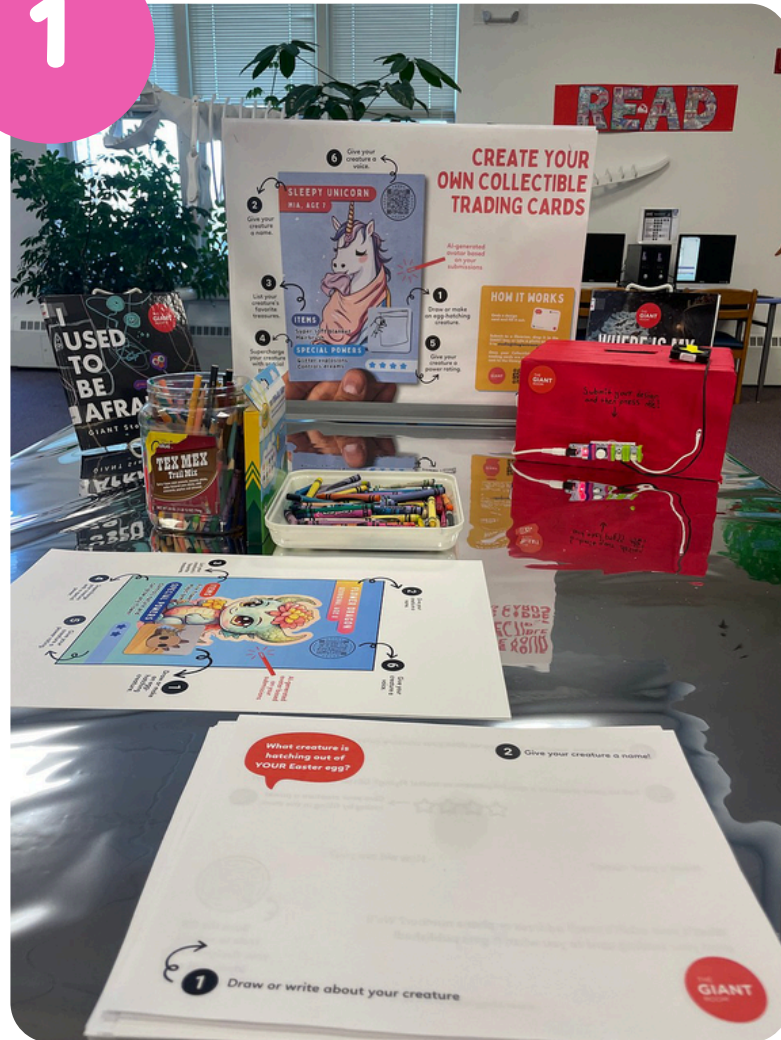
← Back

Submit



# Recommendations for Program Leaders

1



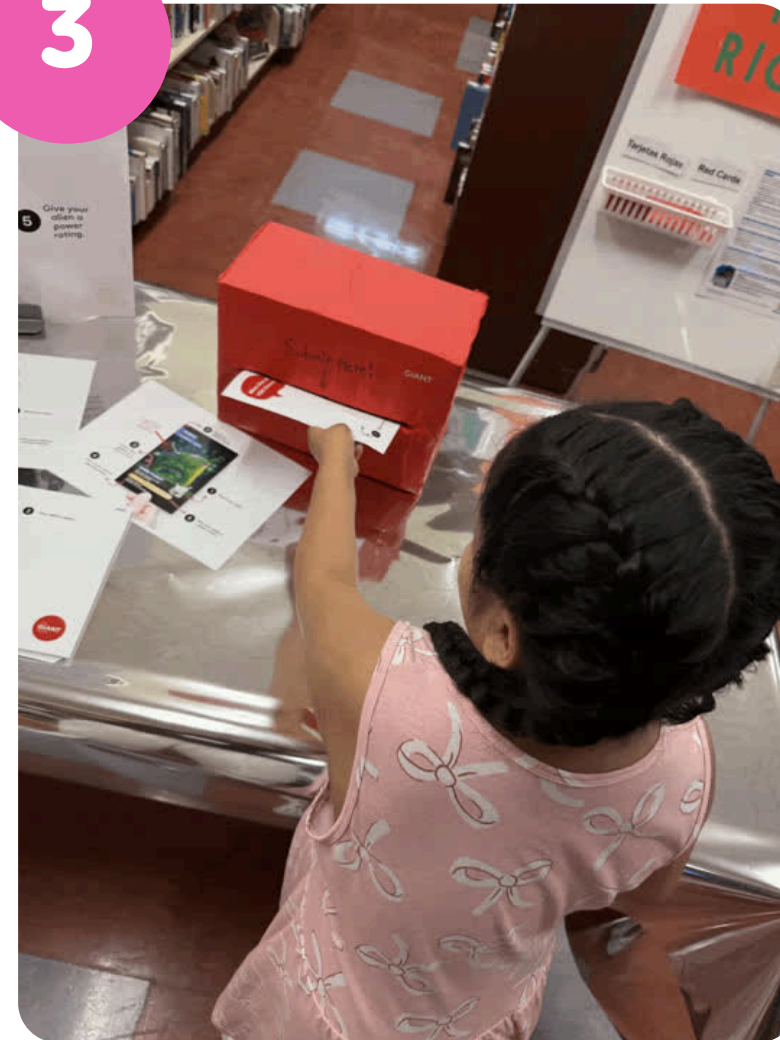
Provide accessible entry points.

2



Design programs for the whole family.

3



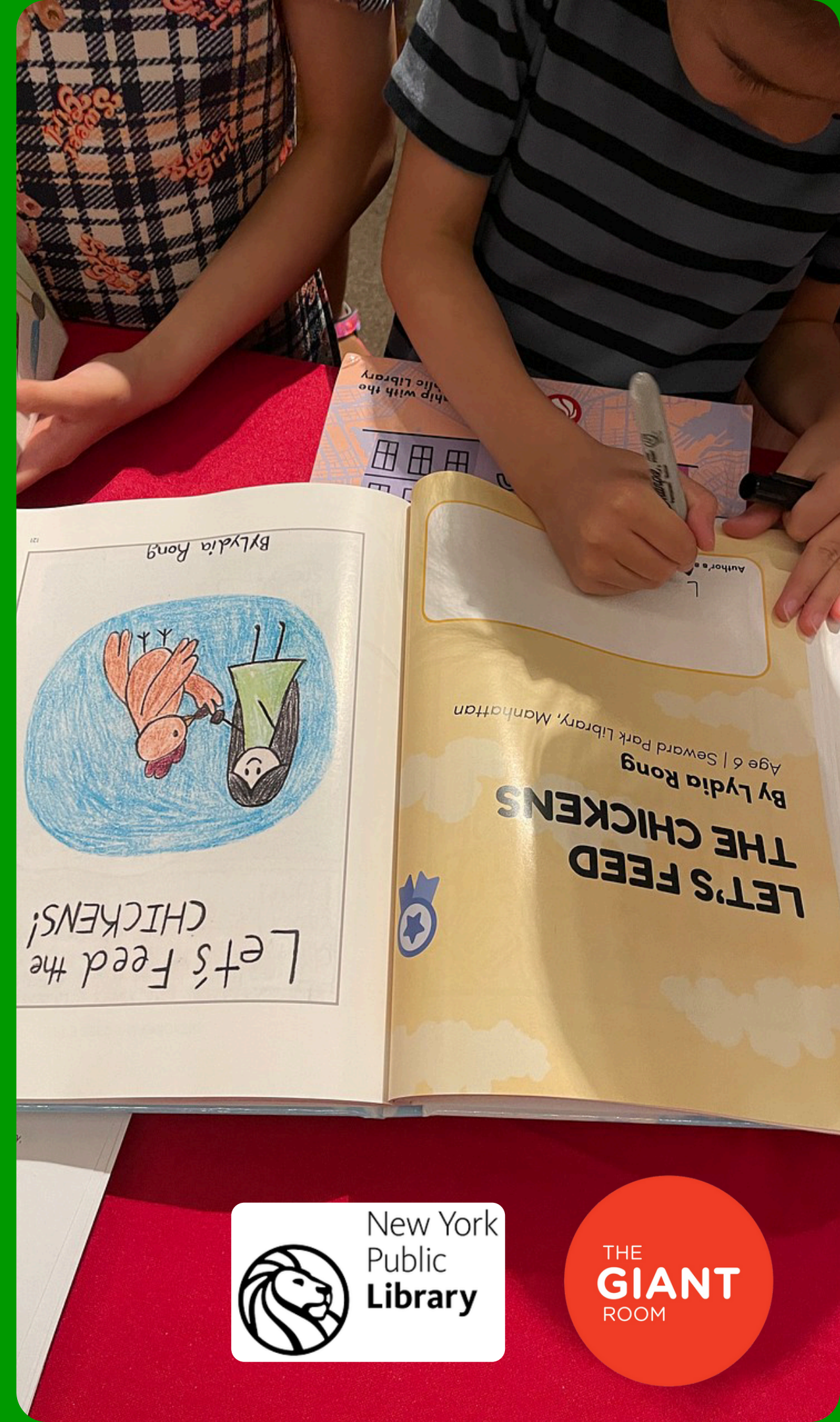
Create opportunities for AI literacy.

4

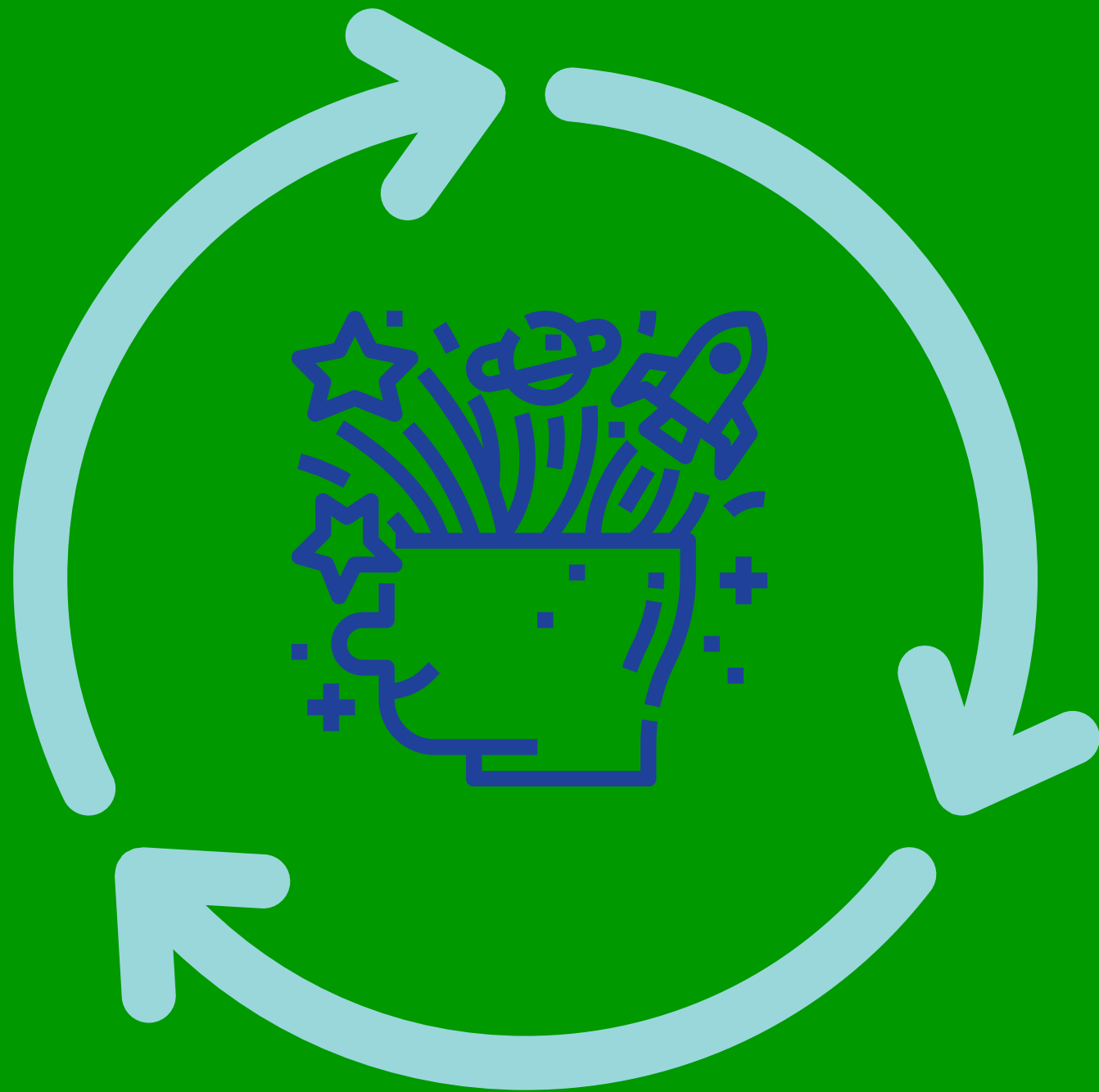


Use affordances of AI to make community connections.

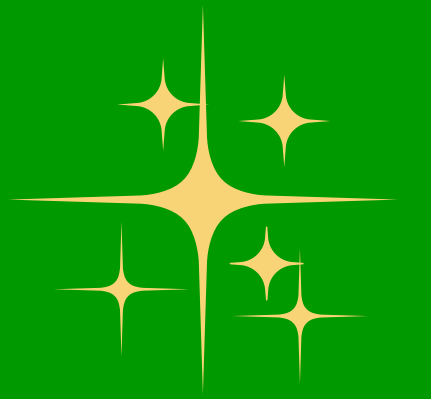








# It's a cycle!



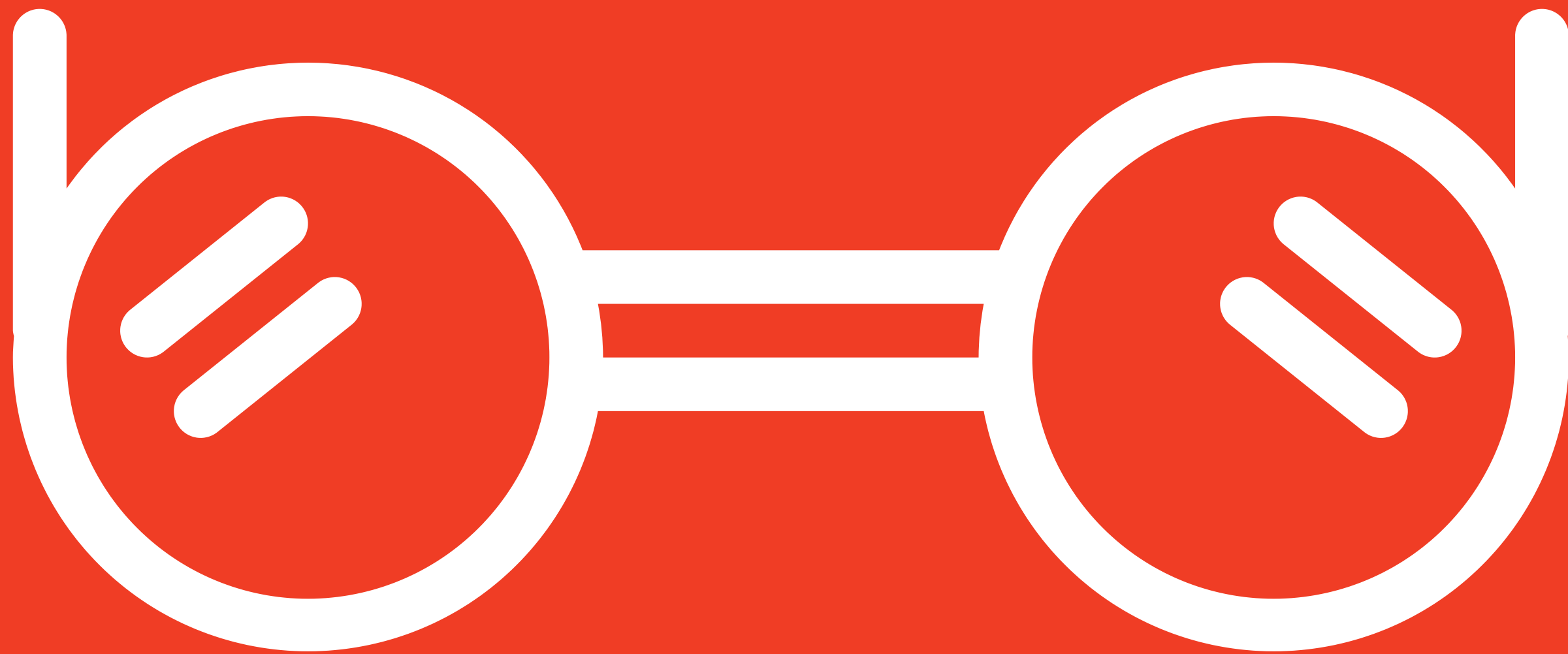
How to use the final publication?  
Share with your community, place  
it on shelves, use as sparks for  
your next events and workshops!



# Middletown Library Service Center







**GIANT  
Lenses**



**A GIANT “lens” is a way  
to frame community’s  
thinking and mindset as  
they engaged with STEM  
activities.**



